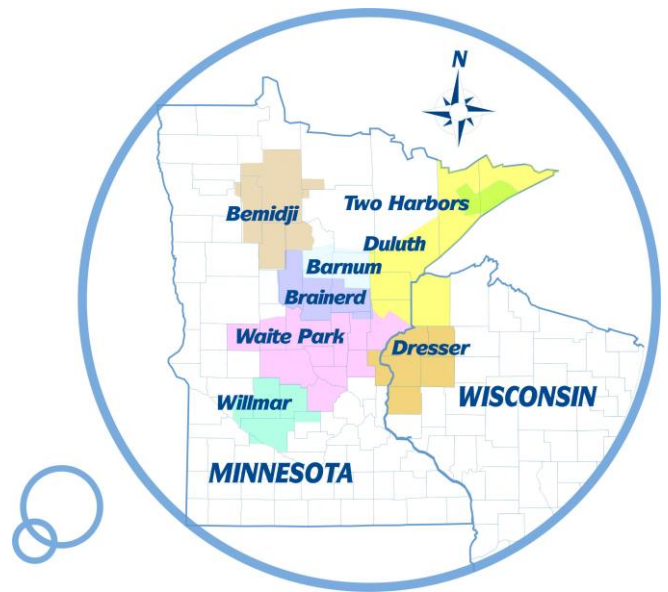


**These organizations/individuals have presentations in this file**

- 1. Bernick's Beverages and Vending**
  - Bernick's Fact Sheet
  
- 2. St. Cloud Technical & Community College**
  - SCTCC Fact Sheet
  
- 3. WACOSA**
  - Raise the Wage Act Concerns



## ***Who We Are***

Bernick's was founded in 1916 by Chas. A. Bernick and his wife Elizabeth. The two of them plus their children were the only employees at the time; making deliveries from a horse drawn wagon, or a sleigh.

Since that time, Bernick's has maintained family ownership and grown to employ about 600 Team Members across 7 locations in Minnesota and Wisconsin. Our fleet of over 400 vehicles makes deliveries to over 10,000 customers, serving a population of over 1 million people.

This year, Bernick's is celebrating 100 years of refreshing beverages, vending products and services with our great team of professionals. We are honored to uphold the tradition of partnering with customers and community that began with Chas. and Elizabeth in 1916.

## ***What We Do***

Bernick's delivers quality beverage and vending solutions to our customers, and offers our comprehensive variety of beverages including:

- Soft drinks; Pepsi-Cola (including companion brands), Dr. Pepper, and many more
- Beer; Miller, Heineken, over 180 brands of beer, partnering with over 40 breweries
- Non-carbonated drinks; bottled water, bottled tea, juices
- Sport drinks; Gatorade, Propel
- Energy drinks; Rockstar, Mt Dew Amp
- Frozen beverages, Hawaiian Punch
- Hot drinks; New England Coffee

In addition to beverages we are also a full-service vending provider offering fresh food items, sandwiches, snacks and many other food items.

## ***Our Commitment to the Communities We Serve***

Bernick's supports the community with competitive grant rounds and in-kind contributions. We provide scholarships to students and support the colleges in our market. Additionally we support and coordinate activity oriented investments, including the Bernick's Family Fitness Series in partnership with YMCA.

We have built a solid reputation in the community as a high quality employer, providing high quality positions and excellent benefits to our Team Members. Bernick's and its Team Members adhere to strong values, including commitment to excellence and integrity; and have been recognized by The MN State Council on Disability as Employer of the Year in 2006.



# ST. CLOUD TECHNICAL & COMMUNITY COLLEGE

St. Cloud Technical & Community College (SCTCC) is a hub of higher education in Central Minnesota, connecting the region's students, employers, and other institutions of higher learning to the community and local economy. With the St. Cloud region's increasingly diverse population, SCTCC is at the center of assessing and meeting the region's growing workforce demands. SCTCC also prepares students for the option of seamless transfer to any public baccalaureate institution in any of the Minnesota State colleges or universities.

SCTCC offers more than 40 majors with over 90 certificate, diploma, and degree options for its 6,000 students enrolled each year. Each of the career and technical education programs maintains relationships to advisory boards, ensuring curriculum is tied with employer needs. SCTCC's industry partners support the college with scholarships, equipment and monetary donations, internships, and other forms of support.

## FY19 STUDENT PROFILE

- 5,264** Credit-seeking
- 45%** Pell Eligible
- 28%** Students of Color
- 98%** Job Placement Rate

SCTCC alumni live and work in the Central Minnesota region, with nearly 75% of graduates working within 35 miles of St. Cloud.

### GENERATING IMPACT IN MINNESOTA

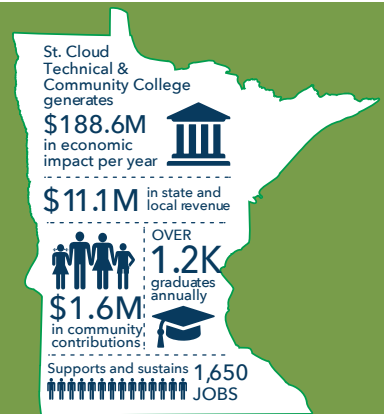
- SCTCC generates an economic impact of \$188.6 million each year. This includes a direct impact of \$96.0 million and indirect/induced impact of \$92.6 million.

### SUPPORTING AND SUSTAINING JOBS IN THE STATE

- SCTCC directly employs 334 people.
- Overall, SCTCC supports more than 1,650 Minnesota jobs (1,032 direct and 618 indirect/induced).

### CONTRIBUTING TO THE LOCAL AND STATE TAX BASE

- SCTCC supports \$11.1 million in state and local taxes as a result of operations, capital spending, student spending, and visitor spending.



MINNESOTA STATE

St. Cloud Technical & Community College,  
A member of Minnesota State

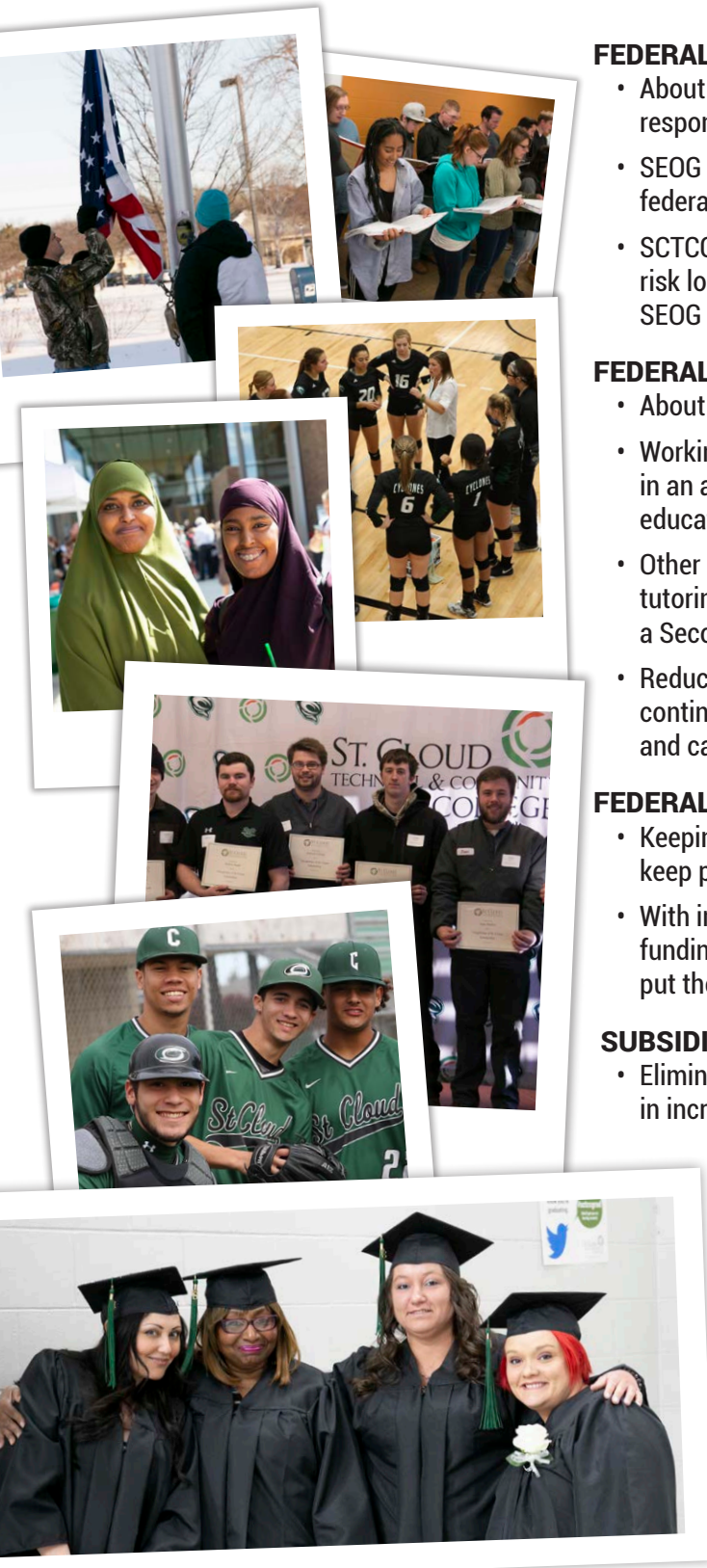
sctcc.edu

320.308.5000 | 800.222.1009  
1540 Northway Drive, St. Cloud, MN 56303

SCTCC is a member of Minnesota State and accredited by the Higher Learning Commission.  
ADA accessible facility. Affirmative action/equal opportunity educator/employer.



# PROPOSED BUDGET PUTS STUDENTS AT RISK FOR ATTAINING EQUITABLE EDUCATIONAL EXCELLENCE



## FEDERAL SUPPLEMENTAL EDUCATIONAL OPPORTUNITY GRANT

- About 59% of SCTCC's SEOG recipients are independent students with family responsibilities.
- SEOG recipients are SCTCC's most financially vulnerable students who rely on federal funding to continue their education.
- SCTCC serves more than 500 SEOG recipient students annually. These students risk losing their ability to attend college and pursue their career goals should SEOG funding be eliminated.

## FEDERAL COLLEGE WORKSTUDY

- About 60 SCTCC students received FCWS funds the 2018-19 academic year.
- Working in the FCWS program provides many students with the ability to work in an area related to their field of study while earning pay to help offset their educational financial needs.
- Other FCWS student employees gain experience working in areas that provide tutoring support for elementary students learning math, reading, and English as a Second Language skills.
- Reducing FCWS funding not only puts SCTCC students at financial risk for continuing their education, it eliminates opportunities for on-the-job training and career development that fits within course schedules.

## FEDERAL PELL GRANTS

- Keeping the Pell Grant maximum award amount at the same level does not keep pace with inflationary increases.
- With increased housing and living expenses, flat Pell Grant awards result in a funding cut to students relying on these funds to meet educational needs and put them at risk for not achieving their educational goals.

## SUBSIDIZED STUDENT LOAN DEBT

- Eliminating subsidized student loans will increase student loan debt and result in increased economic hardship on students relying on student loans.

## RISK SHARING

- If colleges are required to share in the risk of student loan defaults, colleges also need to be given the authority and ability to deny student loan funding in high-risk situations.

## TRIO STUDENT SUPPORT SERVICES

- TRIO provides a sense of community at SCTCC and offers support and services that do not exist elsewhere in the same form on campus.
- The 176 TRIO students SCTCC served in the 2017-18 academic year exceeded objectives, with 78% of participants persisting and 93% in good academic standing.



MINNESOTA STATE

St. Cloud Technical & Community College,  
A member of Minnesota State

sctcc.edu

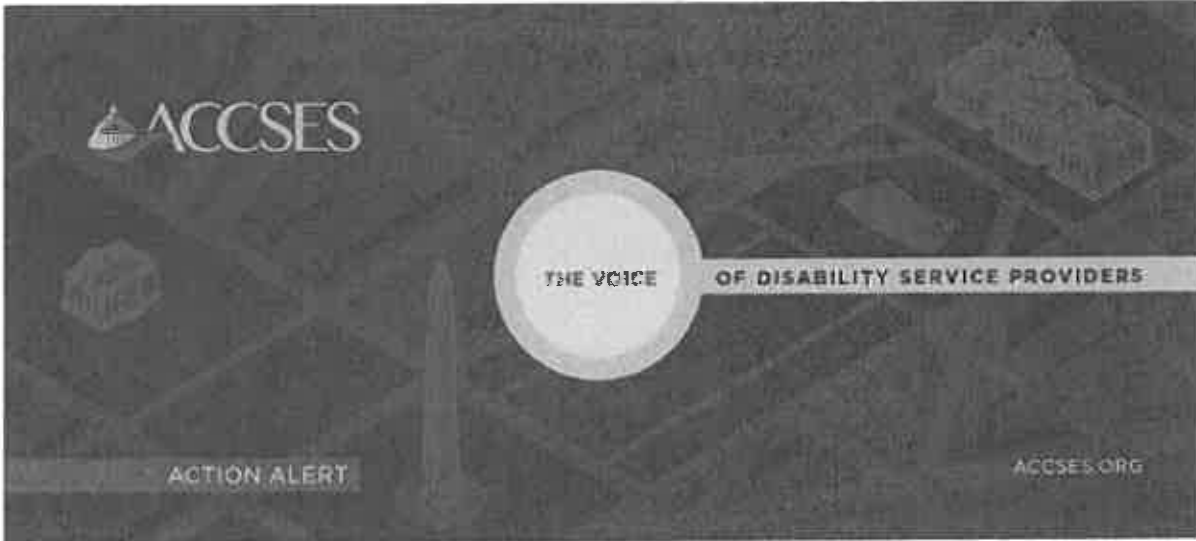
320.308.5000 | 800.222.1009  
1540 Northway Drive, St. Cloud, MN 56303

SCTCC is a member of Minnesota State and accredited by the Higher Learning Commission.  
ADA accessible facility. Affirmative action/equal opportunity educator/employer.



ST. CLOUD  
TECHNICAL & COMMUNITY  
COLLEGE

Is this email not displaying correctly? [View it in your browser.](#)



Connect with us:



Interested in joining ACCSES? Find out more at: [www.accses.org/join-us](http://www.accses.org/join-us).

March 8, 2019

## ACTION ALERT

### Tell Congress TODAY to Vote NO on the Raise the Wage Act

In January, the United States House and Senate introduced companion bills to raise the minimum wage over time. The bills, [H.R. 582](#) and [S. 150](#), The Raise the Wage Act, include language that would eliminate Section 14(c) of the Fair Labor Standards Act, which would eviscerate opportunities for people with significant disabilities who enjoy and want to keep their jobs. On Wednesday, March 6, the House Education and Labor Committee marked up and voted in favor of H.R. 582 on a party line vote. **YOUR VOICE IS NEEDED TO TELL CONGRESS THAT 14(C) IS A VITAL OPTION FOR MANY PEOPLE WHO DESERVE THE DIGNITY OF WORK.** Go to the [ACCSSES Action Center RIGHT NOW](#) and tell your Members of Congress to not let this Bill go to the House floor with this provision in it and, if it does, to VOTE NO. When the Education and Labor Committee held a hearing recently on the Raise the Wage Act, only people who spoke against 14(c) were included on the Panel. **YOUR VOICE MUST BE HEARD. ACT NOW.** Send an Action Alert. Call your Members of Congress, particularly your Representatives, and tell them to remove this

provision of the Bill or VOTE NO. Tweet your Members. Facebook your Members. Get your message heard.

Kind regards,



Kate McSweeney  
Vice President of Government Affairs &  
General Counsel  
ACCSES

---

*Copyright © 2013-2019 ACCSES, All rights reserved.*

**Our mailing address is:**  
1501 M Street, NW - 7th Floor | Washington, DC 20005  
202-349-4259

[unsubscribe from this list](#) | [update subscription preferences](#) | [forward to a friend](#)